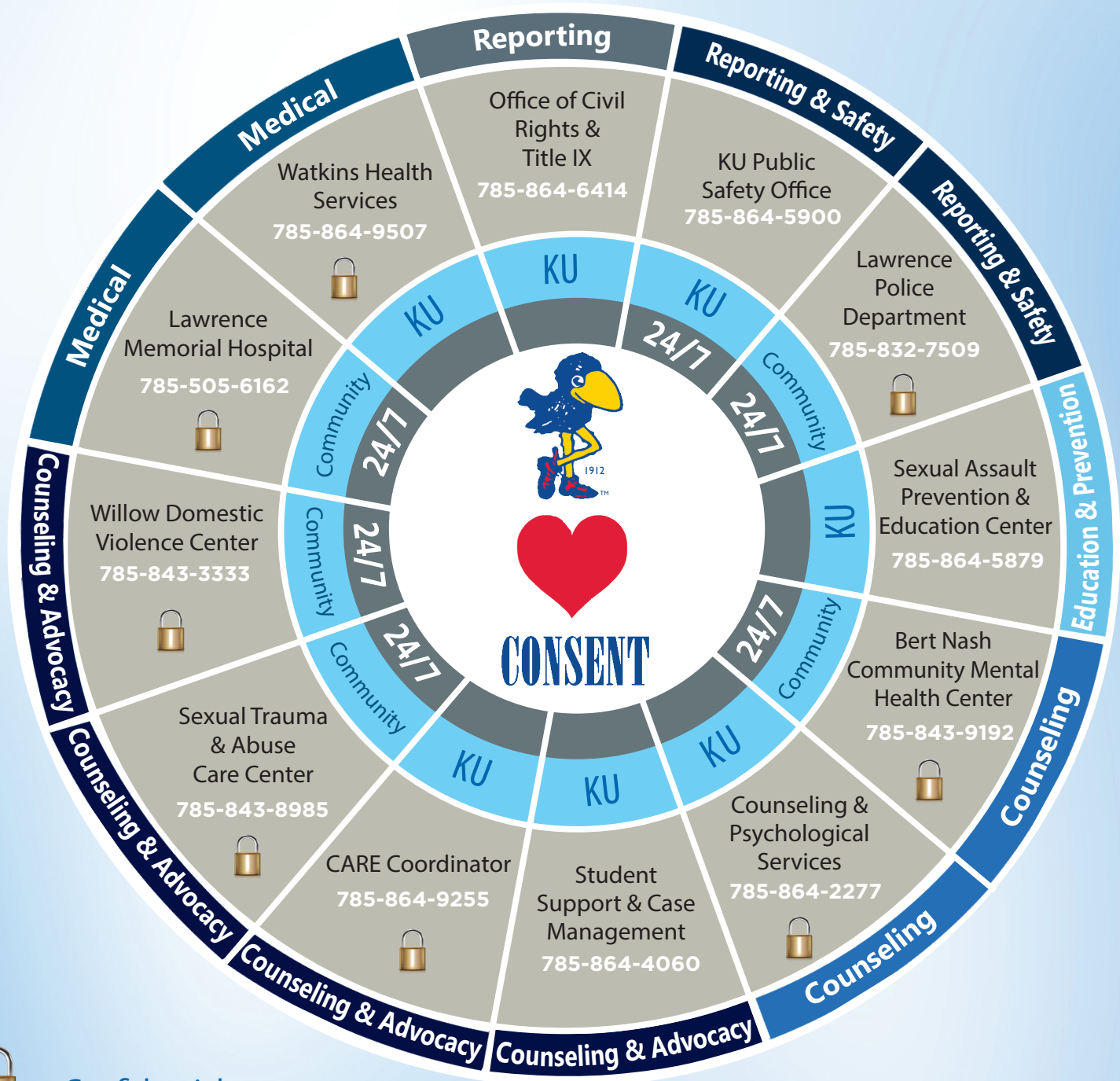


Resources for Sexual & Intimate Partner Violence



 = Confidential
(Does not report to KU)

Medical

- Survivors are highly encouraged to seek confidential medical care after any assault.
- Evidence collection by a Sexual Assault Nurse Examiner (SANE) is available up to 120 hours after a sexual assault at no cost to the survivor.
- Preventative medication for sexually transmitted infections and/or pregnancy is available.
- Evidence can be collected without reporting and is stored for five years.

Education & Prevention

- Educational presentations and trainings for students, faculty and staff on a variety of topics relating to sexual assault and intimate partner violence are available at no cost:
 - › Drug and Alcohol Facilitated Rape
 - › Rape Culture
 - › Bringing in the Bystander
 - › Dynamics of Intimate Partner Violence
 - › Neurobiology of Trauma
 - › Trauma Informed Responses for Professionals

Reporting & Safety

- All students affected by sexual or intimate partner violence are encouraged to file reports.
- Police: Students have the option to provide a criminal or informational only report.
- Office of Civil Rights & Title IX: Students have the option to report and/or participate in a voluntary internal campus investigation. The Office of Civil Rights & Title IX also provides interim measures for students (academic assistance, escorts, housing relocations) without a formal investigation.

Counseling & Advocacy

- Care Coordinator: Provides confidential and free individualized support for all students affected by sexual and domestic violence and assistance navigating campus and community resources.
- Community Advocacy: Off campus confidential resources including therapy, advocacy and safe shelter are available through the Care Center (Sexual Assault) and the Willow (Intimate Partner Violence).
- Counseling: No and low cost therapeutic resources for both acute and historical assault are available on and off campus.

Provided by Watkins Health Services, Sexual Assault Prevention & Education



The University of Kansas prohibits discrimination on the basis of race, color, ethnicity, religion, sex, national origin, age, ancestry, disability, status as a veteran, sexual orientation, marital status, parental status, gender identity, gender expression, and genetic information in the university's programs and activities. Retaliation is also prohibited by university policy. The following persons have been designated to handle inquiries regarding the nondiscrimination policies and are the Title IX coordinators for their respective campuses: Executive Director of the Office of Civil Rights & Title IX, civilrights@ku.edu, 1246 West Campus Road, Room 153A, Lawrence, KS 66045, 785-864-6414, 711 TTY (for the Lawrence, Edwards, Parsons, Yoder, and Topeka campuses); Director, Equal Opportunity Office, Mail Stop 7004, 4330 Shawnee Mission Parkway, Fairway, KS 66205, 913-588-8011, 711 TTY (for the Wichita, Salina, and Kansas City, Kansas, medical center campuses).